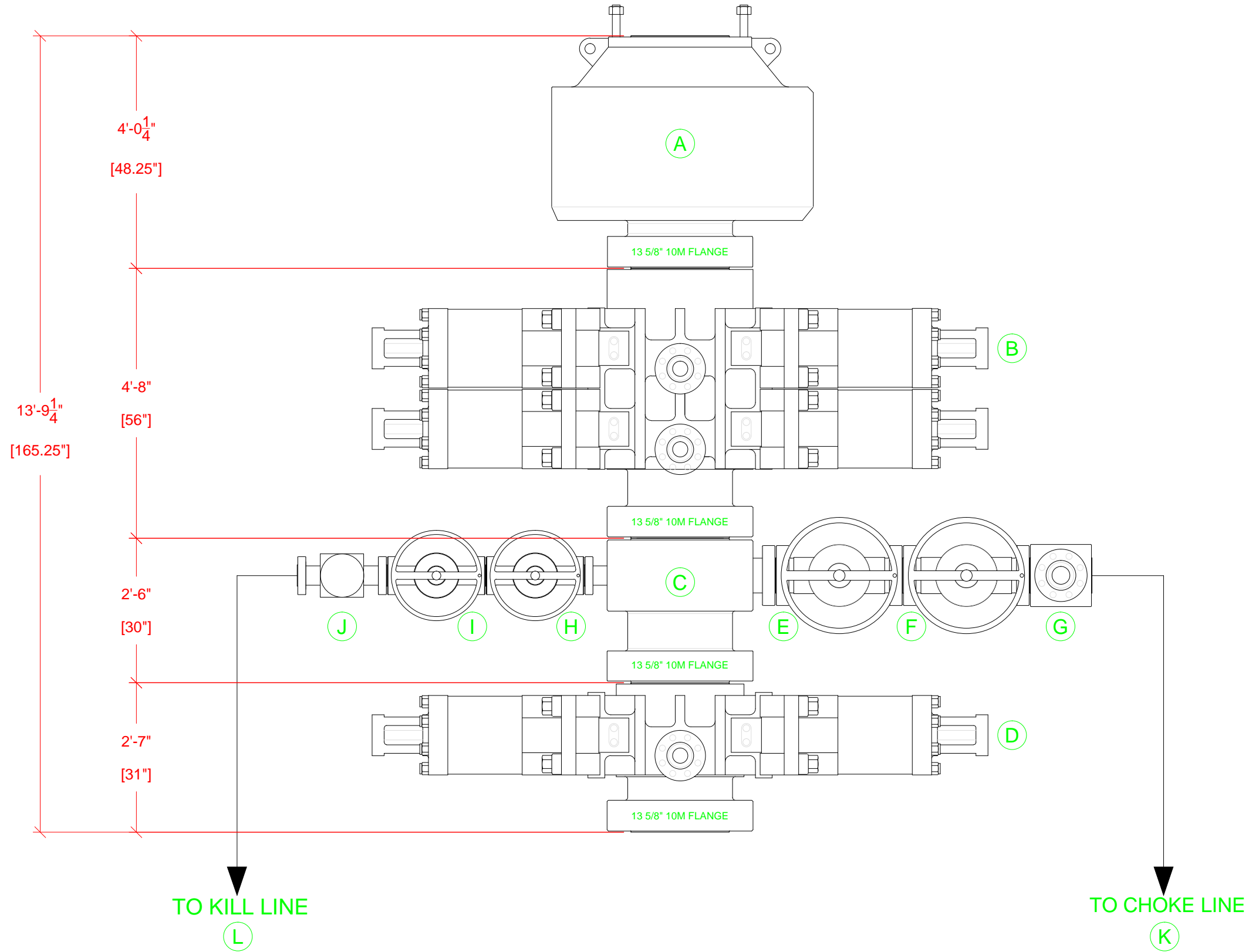


**BOPE INFORMATION**

ITEM	DESCRIPTION	MAKE	MODEL
A	ANNULAR BOP	CAMERON	13 5/8" 5M T90
B	DOUBLE RAM BOP	CAMERON	13 5/8" 10M U
C	MUD CROSS	CAMERON	13 5/8" 10M
D	SINGLE RAM BOP	CAMERON	13 5/8" 10M U
E	WING VALVE	CAMERON	4 1/16" 10M FLS MANUAL
F	HCR VALVE	CAMERON	4 1/16" 10M HCR
G	CHOKE BLOCK	CAMERON	4 1/16" 10M
H	KILL VALVE	CAMERON	2 1/16" 10M FLS MANUAL
I	KILL VALVE	CAMERON	2 1/16" 10M FLS MANUAL
J	CHECK VALVE	CAMERON	2 1/16" 10M "R" CHECK
K	CHOKE LINE	MIDWEST HOSE	4 1/16" 10M ARMOR-COVERED
L	KILL LINE	MIDWEST HOSE	2 1/16" 5M ARMOR-COVERED
M			



THIS DRAWING IS OWNED BY AND CONTAINS PROPRIETARY INFORMATION OF CACTUS DRILLING COMPANY, L.L.C. IT IS CONDITIONALLY LOANED AND IS TO BE RETURNED UPON COMPLETION OF WORK OR UPON EARLIER REQUEST. THE BORROWER BY RECEIVING IT HAS AGREED NOT TO REPRODUCE NOR TO COPY IT IN WHOLE OR IN PART NOR TO FURNISH INFORMATION FROM IT TO OTHERS NOR TO MAKE ANY USE OF IT OR THE INFORMATION CONTAINED THEREIN EXCEPT FOR OR UNDER SPECIFIC LICENSE FROM CACTUS DRILLING COMPANY, L.L.C.

SYM	DATE	REVISION	BY

TOLERANCE UNLESS OTHERWISE SPECIFIED DIMENSIONS IN INCHES	
DECIMAL	DIMENSION
CONCENTRICITY	
X.X	±.1
X.XX	±.06
X.XXX	±.010
ANGLES	± .5 DEGREES
ACAD FILE: CAC166-A-005-00-RO	

CUSTOMER INFO:		
FILE:	R-166_BOP.dwg	
DWG BY:	J.D.B.	07/12/17
CHK BY:		
APP BY:		
SCALE: NTS		

**CACTUS** Drilling Co., L.L.C.  
Oklahoma City, OK, U.S.A.  
Tel: 405-577-5347 Fax: 405-577-9306

TITLE:  
**RIG 166  
BOP STACK-UP**

SIZE: **B** SHEET: **1/1**  
**CAC166-A005**